



LONGWOOD GARDENS WILDLIFE TREE



SOME BIRDS ATTRACTED TO LONGWOOD'S WILDLIFE TREE

American Crow	Gray Catbird	Sparrow, House
Blue Jay	Mourning Dove	Sparrow, Song
Brown Creeper	Northern Cardinal	Sparrow, White-throated
Carolina Chickadee	Northern Flicker	Tufted Titmouse
Cedar Waxwing	Northern Mockingbird	Winter Wren
Dark-eyed Junco	Nuthatch, Red-breasted	Woodpecker, Downy
Eastern Towhee	Nuthatch, White-breasted	Woodpecker, Hairy
Finch, House	Ruby-crowned Kinglet	Woodpecker, Red-bellied
Finch, Purple		Yellow-bellied Sapsucker



© Longwood Gardens, Inc.

PO Box 501, Kennett Square, PA 19348-0501


610-388-1000

Terrace Restaurant Information:

610-388-6671

www.longwoodgardens.org

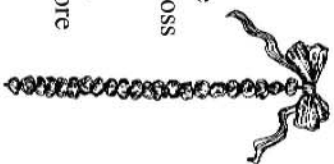
11/04- 20M



*Longwood
Gardens®*

Raisin Icicle

Using a needle and waxed dental floss, thread raisins to form 1.5 to 2 foot lengths. Start with a knot at the end of the string or tie and knot the floss around the first raisin and continue stringing raisins. Tie the top end with raffia or a colorful ribbon to hang. Store in cool, dry place away from rodents.



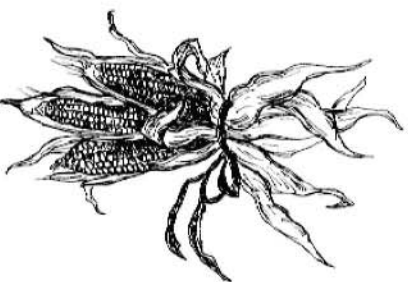
Cranberry Wreath

Using a medium gauge florist wire (12-16 inch length), bend a 1 inch "L" into one end. At the other end, begin stringing fresh cranberries. Do not use berries that are soft. Run the wire through the bottom and top of the berry, not through the sides. String fruit until there is about 1 inch of wire left and twist both ends of the wire together to form a wreath. Refrigerate until ready to use.

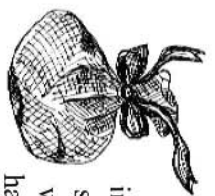


Indian Corn

Tie raffia around 3 corn husks leaving 2 raffia ends for hanging. Some corn may break off from their husk; these may be glued back to the husk or discarded. Store away from rodents.



Suet Bags

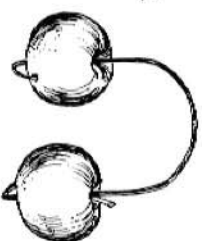


Cut onion or bulb bags into 12 x 12 inch squares. Fill with chunks of raw suet purchased from a butcher. Tie with raffia or a colorful ribbon to hang. Freeze until ready to use.

LONGWOOD GARDENS WILDLIFE TREE ORNAMENTS

Crabapple Bundles

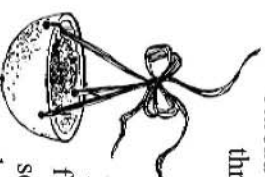
Thread a medium-to-heavy gauge florist wire (12-18 inch length) through a crabapple or small apple from top to bottom. Bend a hook in the wire and secure it in the base of the apple. Thread the other end of wire through the top of a second apple and secure it with a similar hook. Refrigerate until ready to use.



Citrus Cups

Halve an orange or grapefruit and remove the juice and pulp. Make three holes spaced equally around and near the cut edge of the citrus.

Thread a 10 to 12 inch piece of raffia through each hole and secure with a knot. Tie the 3 loose raffia ends together no more than 5 inches above the fruit cup. Make a small hole in the bottom center of the cup for drainage. Fill the cup with birdseed or nuts. Store in a cool, dry place for 1 to 2 days before hanging.



Dried Flower Cluster

Cluster together several stems of different dried flower and seed heads to form a nosegay. Use raffia to tie their stems together. Arrange the flowers so that the center stem is one of the longest and the outer stems are among the shortest. Small sunflowers, wheat, barley, and millet make good bird food.



Pine Cone Feeder

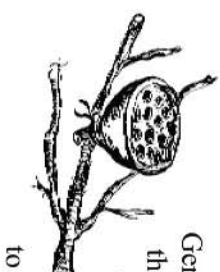
Ingredients:

- 1 cup rendered suet
- 1 cup chunky peanut butter
- 3.5 cup yellow cornmeal
- Birdseed mix
- Pine cones (white pine, *Pinus strobus*, works well)
- Raffia

- The raffia about 2 to 3 cone scales down from the pointed tip, leaving 2 tails for hanging
- Melt/render suet in a pot over low to medium heat
- Strain liquefied suet through cheesecloth to remove any tissues that might spoil
- Stir peanut butter in until melted and blended
- Add cornmeal and blend until mixture has a doughy texture
- When mixture has cooled, pack it into the pine cone openings, leaving the ends of the cone scales exposed as this provides a perch for birds
- Sprinkle or roll suet-covered cone in bird seed
- Refrigerate unused suet/peanut butter mixture



Lotus Cups



Gently push lotus seeds back into the pod. Fill the empty holes with cranberries, raisins, or suet-seed mixture. Wire the cup to a tree stem so the pod is facing up to keep the filler from falling out.